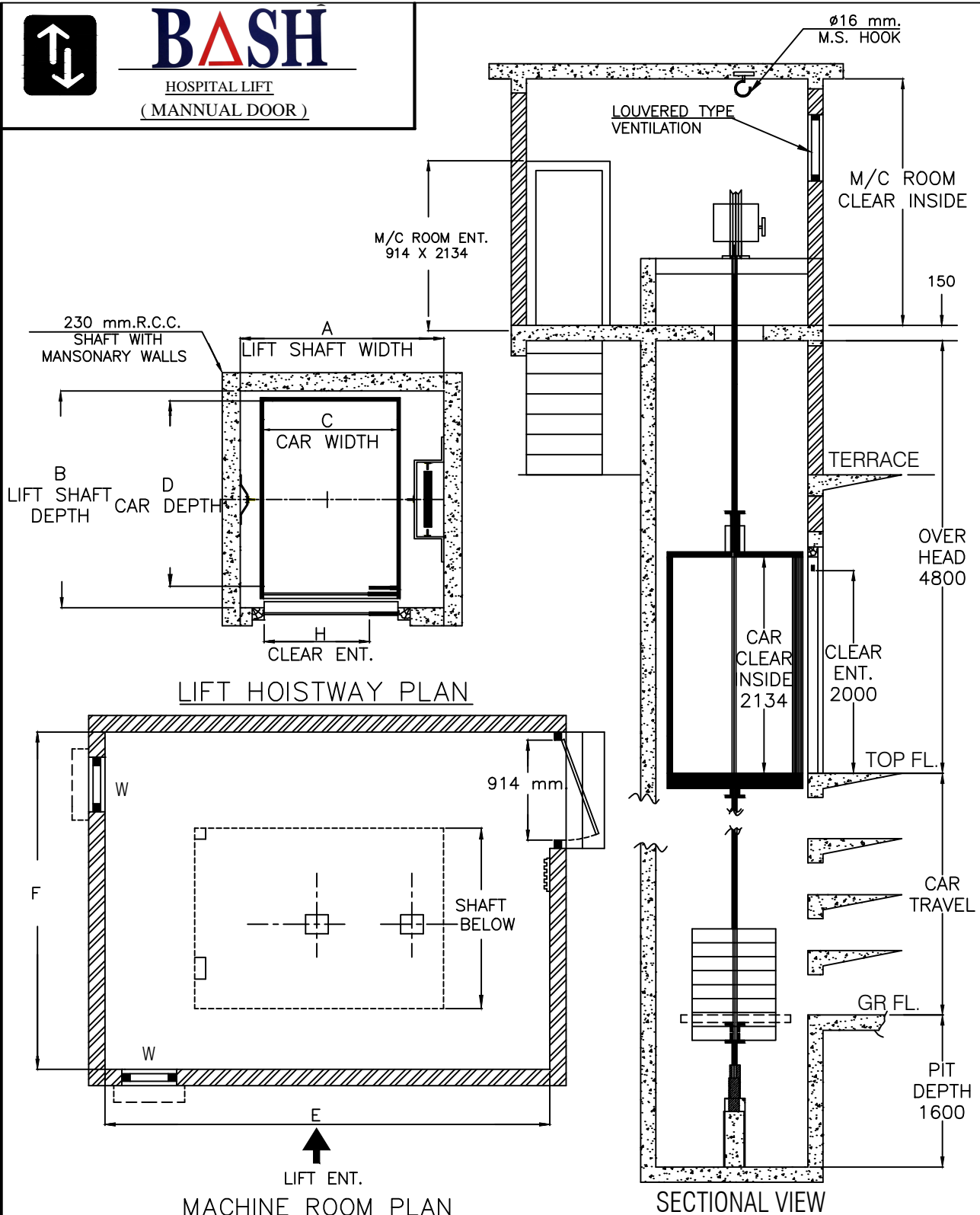




BASH

HOSPITAL LIFT
(MANNUAL DOOR)



| LOAD | | LIFT SHAFT | | CAR INSIDE | | PIT | CLEAR ENT. | SPEED | OVERHEAD |
|---------|------|------------|------|------------|------|-------|------------|----------|-----------|
| PERSONS | KGS | A | B | C | D | DEPTH | H | (M.P.S.) | |
| 10 | 680 | 1650 | 2150 | 950 | 1850 | 1600 | 800 | 0.5/0.33 | 4200/4800 |
| 12 | 816 | 1800 | 2150 | 1100 | 1850 | 1600 | 800/900 | 0.5/0.33 | 4200/4800 |
| 15 | 1020 | 1800 | 2700 | 1100 | 2200 | 1600 | 900/1000 | 0.33 | 4800 |
| 17 | 1156 | 2100 | 2700 | 1200 | 2250 | 1600 | 1200 | 0.33 | 4800 |
| 20 | 1360 | 2200 | 3000 | 1300 | 2400 | 1600 | 1200 | 0.33 | 4800 |
| 26 | 1768 | 2400 | 3000 | 1600 | 2400 | 1600 | 1200 | 0.33 | 4800 |

ALL DIMENSIONS ARE IN MM.

PIT DEPTH :- 1600 mm.

IMP NOTE :- FRONT WALLS TO BE CONSTRUCTED WITH OUR INSTRUCTIONS ONLY NOT TO SCALE